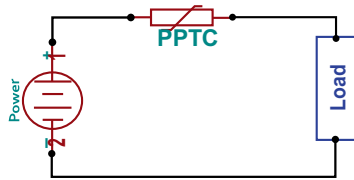


the
PPTC Selection Guide

1 Circuit Parameters
Determine your circuit parameters



- Circuit Operating Current
- Maximum Operating Voltage
- Maximum Interrupt Current
- Maximum Ambient Operating Temperature

2 Voltage & Current Rating
Select a RFE PPTC Device with proper electrical characteristics



V_{Max}/I_{Max} are the maximum voltage/current PPTC devices can withstand without damage
 Hold Current (I_H) is the maximum current which a PPTC device will keep in low resistance state at 23°C
 Trip Current (I_T) is the minimum current which a PPTC will trip at 23°C
 Check the electrical characteristics table to ensure the PPTC device can match the circuit parameters

3 Ambient Temperature
Evaluate the maximum circuit operating ambient temperature



PPTC device is temperature sensitive, check the Thermal Derating table to verify the performance of PPTC device you select in Step 2 under different ambient temperature

4 Time to Trip
Determine Time to Trip for desired protection capabilities



Time to Trip is the amount of time that a PPTC device need to transfer low resistance state to high resistance "Tripped" state under fault condition. Make sure the PPTC device time to trip provides the desired protection capabilities

5 Check Dimension

We provide a various types of packages and different dimensions, use the datasheet dimension table to compare the PPTC device you selected and your application's design consideration.