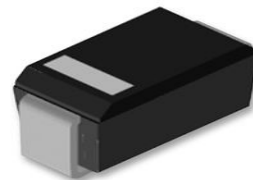


FEATURES

- Available in SMA (with suffix A) and SMB (with no suffix)
- Repetitive peak reverse voltage (V_{RRM}) 20V ~ 100V
- Surge overload rating to 50A peak
- Low power loss, high efficiency
- Guard ring die construction for transient protection



* A suffix = SMA (DO-214AC)

* no suffix = SMB (DO-214AA)

MECHANICAL DATA

- Molded plastic body (UL 94V-0 rated)
- Terminals: Solder plated
- Polarity: Indicated by cathode band
- Packaging: 16mm tape EIA STD RS-481
- Weight: 0.21 gram

MAXIMUM RATINGS & ELECTRICAL CHARACTERISTICS

Rating at 25°C ambient temperature unless otherwise specified.
 Single phase, half wave, 60Hz, resistive or inductive load.
 For capacitive load, derate current by 20%

Parameter	Symbol	SS22*	SS23*	SS24*	SS25*	SS26*	SS29*	SS210*	Unit	
Maximum Repetitive Peak Reverse Voltage	V_{RRM}	20	30	40	50	60	90	100	V	
Maximum RMS Voltage	V_{RMS}	14	21	28	35	42	63	70	V	
Maximum DC blocking Voltage	V_{DC}	20	30	40	50	60	90	100	V	
Maximum Average Forward Rectified Current (Fig.1)	$I_{F(AV)}$	2.0							A	
Peak Forward Surge Current 8.3ms single half sine-wave superimposed on rated load (JEDEC method)	I_{FSM}	50							A	
Max. Instantaneous Forward Voltage @ 2.0A	V_F	0.50		0.70		0.85			V	
Maximum DC Reverse Current @ $T_a=25^\circ\text{C}$ at rated DC Blocking Voltage @ $T_a=100^\circ\text{C}$	I_R	0.50					0.10			mA
		10			5.0					
Typical Thermal Resistance (Note)	$R_{\theta JA}$	75							$^\circ\text{C/W}$	
	$R_{\theta JL}$	17								
Operating Junction Temperature Range	T_J	-55 to + 125			-55 to + 150				$^\circ\text{C}$	
Storage Temperature Range	T_{STG}	-55 to + 150							$^\circ\text{C}$	

■ RATING & CHARACTERISTIC CURVES

FIG. 1- MAXIMUM FORWARD CURRENT DERATING CURVE

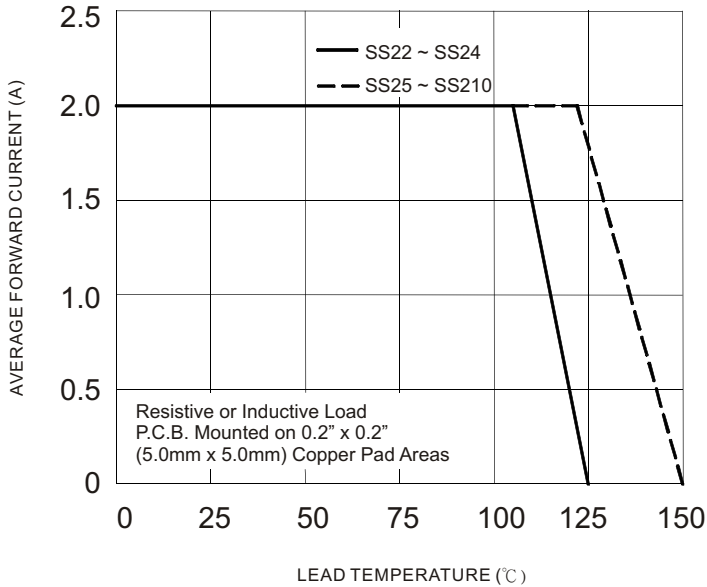


FIG.2-MAXIMUM NON-REPETITIVE FORWARD SURGE CURRENT

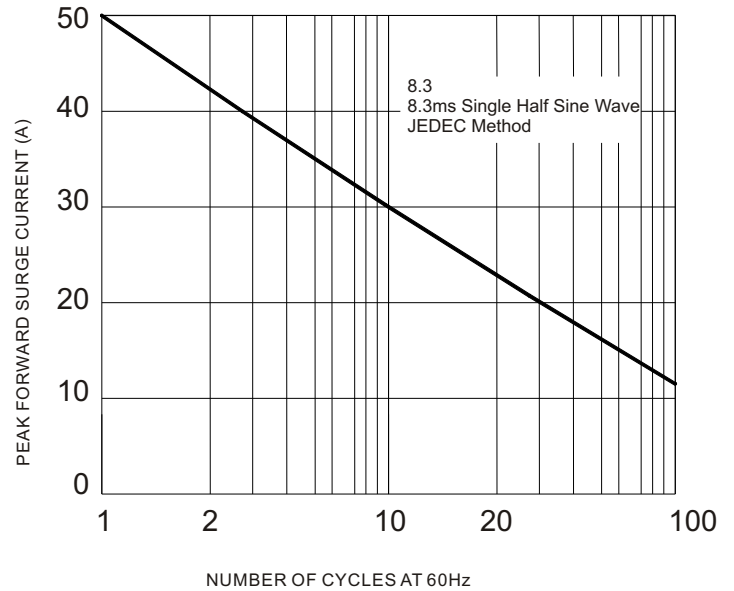


FIG.3-TYPICAL INSTANTANEOUS FORWARD CHARACTERISTICS

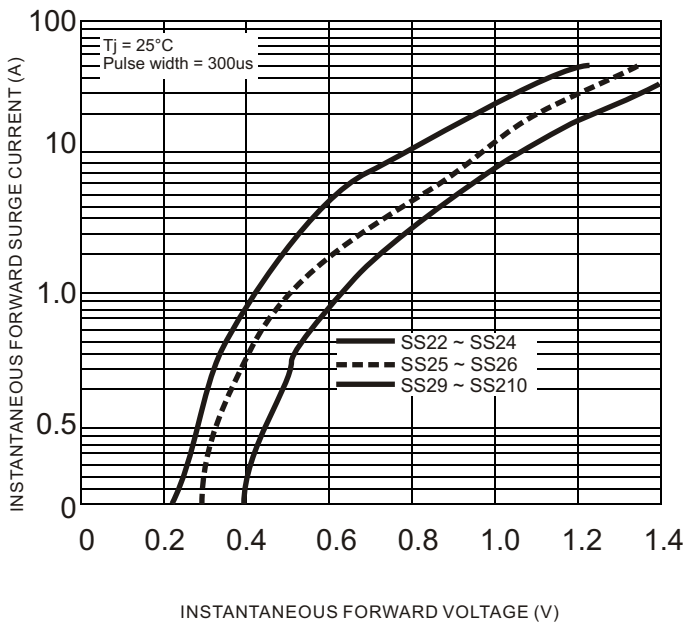
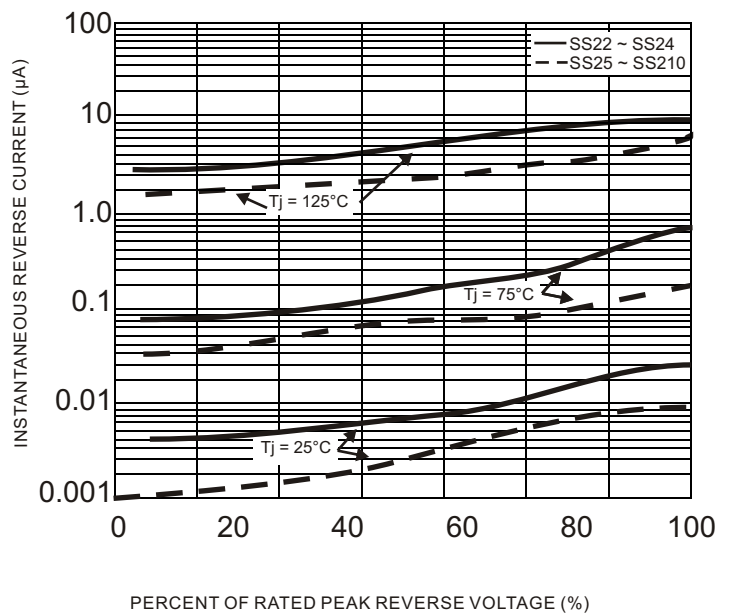
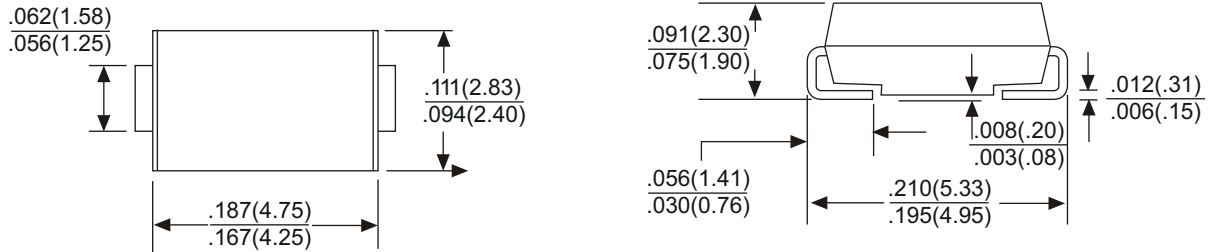


FIG.4-TYPICAL REVERSE CHARACTERISTICS



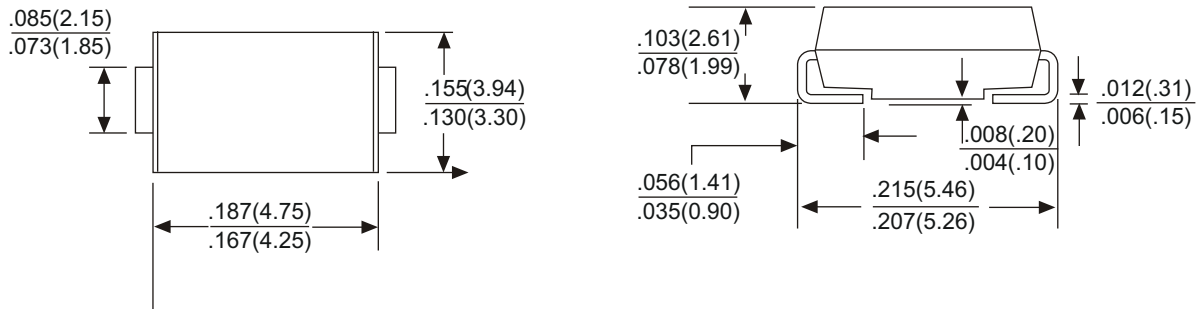
■ **OUTLINE DIMENSIONS**

DO-214AC (SMA)



Dimensions in inches and (millimeters)

DO-214AA (SMB)



Dimensions in inches and (millimeters)