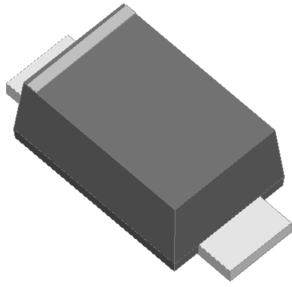


FEATURES

- Low profile package
- Ideal for automated placement
- Glass passivated chip junction
- Switching for general purpose
- High forward surge capability
- Meets MSL level 1, per J-STD-020, LF maximum peak of 260 °C



TYPICAL APPLICATIONS

For use in general purpose switching rectification of power supply, inverters, converters, and freewheeling diodes for consumer and telecommunication.

MECHANICAL DATA

- **Package:** SOD-123FL
Molding compound meets UL 94 V-0 flammability rating, RoHS-compliant, halogen-free
- **Terminals:** Tin plated leads, solderable per J-STD-002 and JESD22-B102
- **Polarity:** Cathode line denotes the cathode end

MAXIMUM RATINGS (T_a=25°C Unless otherwise specified)

PARAMETER	SYMBOL	UNIT	G15A	G15B	G15D	G15G	G15J	G15K	G15M
Device marking code			G15A	G15B	G15D	G15G	G15J	G15K	G15M
Repetitive peak reverse voltage	V _{RRM}	V	50	100	200	400	600	800	1000
Average rectified output current @60Hz sine wave, Resistance load, T _a (FIG.1)	I _O	A	1.5						
Surge(non-repetitive)forward current @60Hz half-sine wave,1 cycle, T _J =25°C	I _{FSM}	A	45						
Storage temperature	T _{stg}	°C	-55 ~+150						
Junction temperature	T _J	°C	-55 ~+150						

ELECTRIC CHARACTERISTICS (T_a=25°C Unless otherwise specified)

PARAMETER	SYMBOL	UNIT	TEST CONDITIONS	G15A	G15B	G15D	G15G	G15J	G15K	G15M
Maximum instantaneous forward voltage drop per diode	V _F	V	I _{FM} =1.5A	1.1						
Maximum DC reverse current at rated DC blocking voltage per diode	I _{RRM}	μA	T _a =25°C	5						
			T _a =125°C	100						

THERMAL CHARACTERISTICS (T_a=25°C Unless otherwise specified)

PARAMETER	SYMBOL	UNIT	G15A	G15B	G15D	G15G	G15J	G15K	G15M
Thermal resistance	R _{θJ-A}	°C/W	70 ⁽¹⁾						
	R _{θJ-L}		20 ⁽¹⁾						

Note:
(1) Thermal resistance between junction and ambient and between junction and lead mounted on P.C.B with 3mm*3mm copper pad areas.

CHARACTERISTICS (TYPICAL)

FIG.1: Io-TL Curve

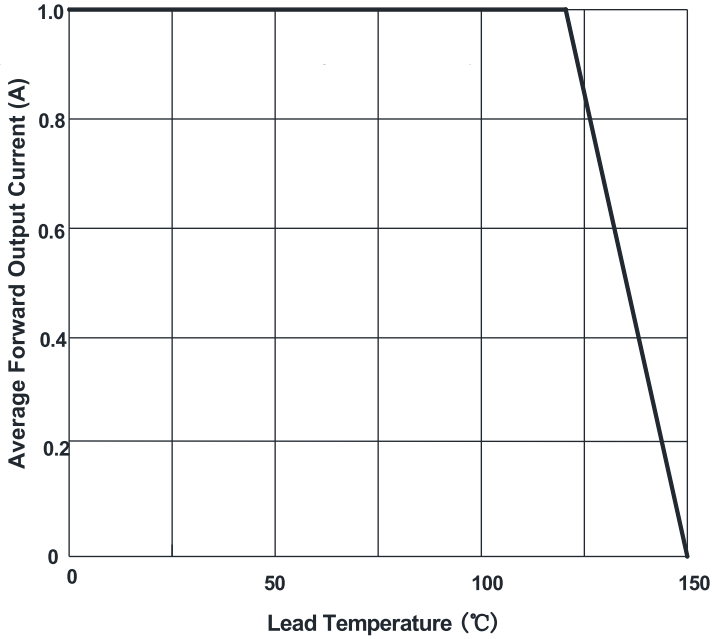


FIG.2: Forward Surge Current Capability

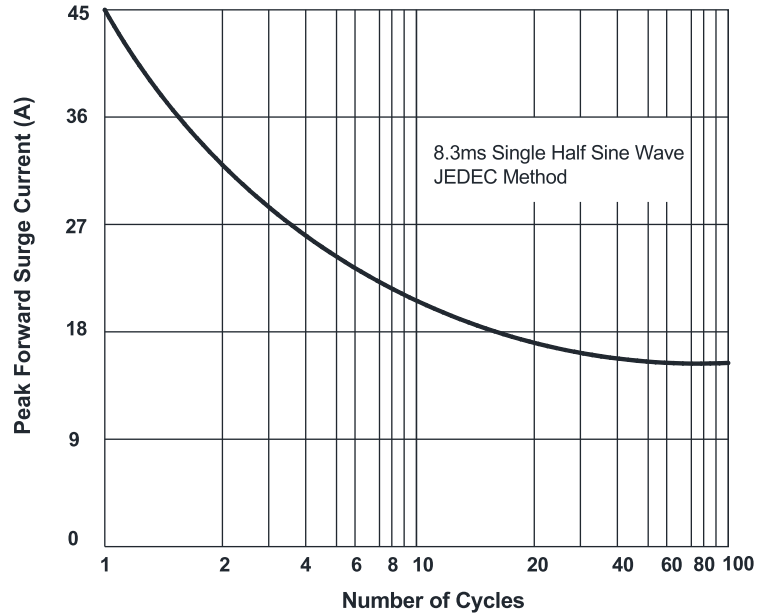


FIG.3: Typical Forward Voltage

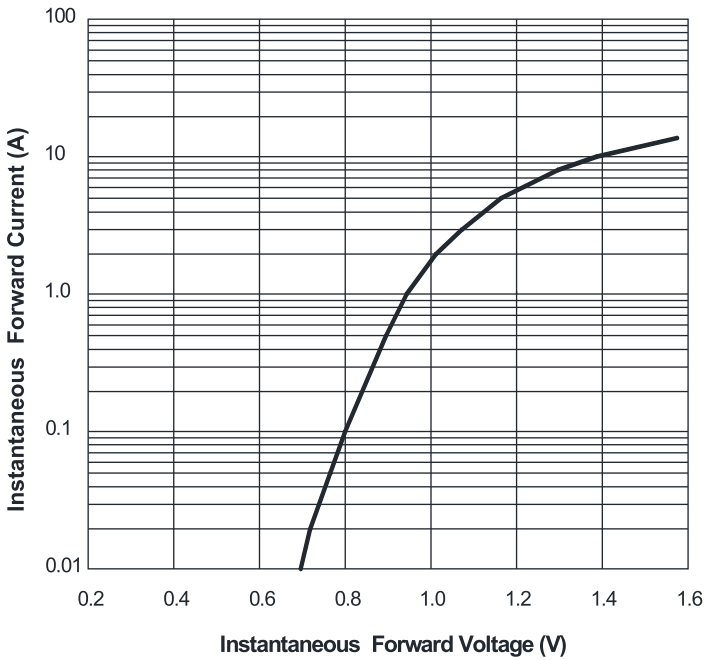
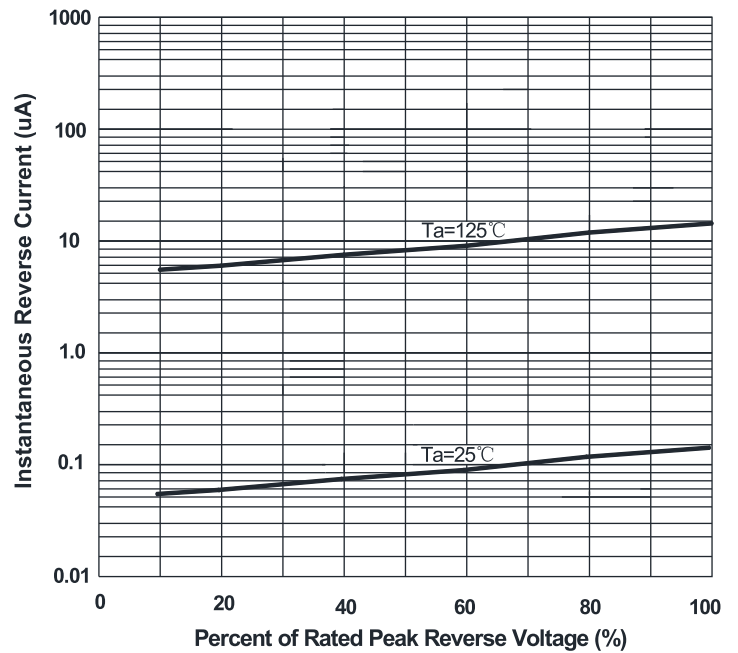


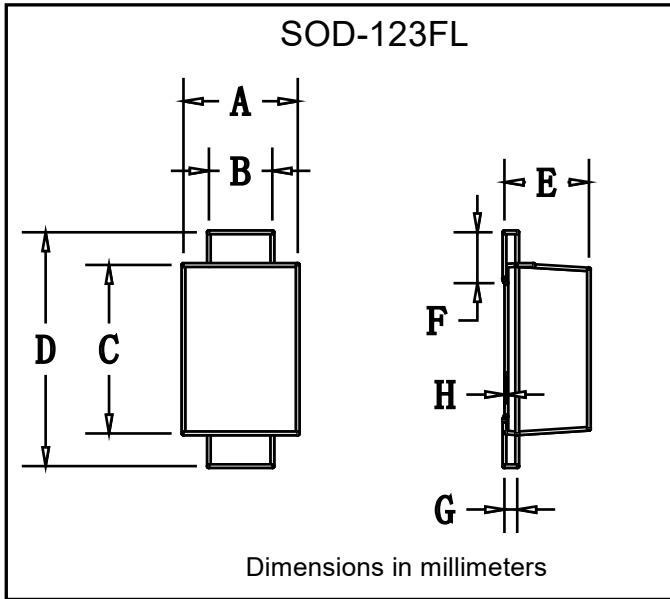
FIG.4: Typical Reverse Characteristics



PACKAGING INFORMATION

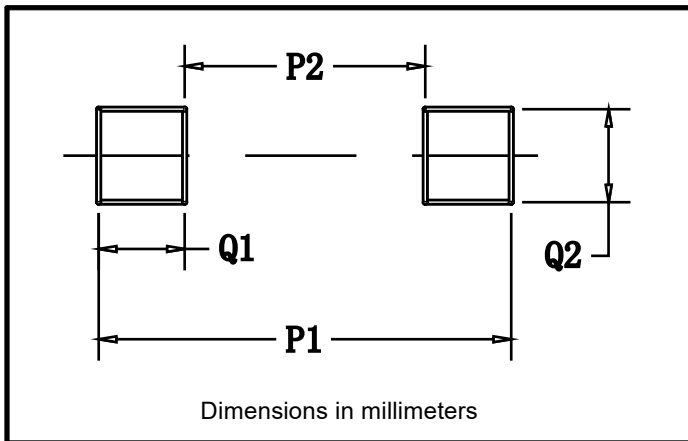
PREFERRED P/N	PACKING CODE	UNIT WEIGHT(g)	MINIMUM PACKAGE(pcs)	INNER BOX QUANTITY(pcs)	OUTER CARTON QUANTITY(pcs)	DELIVERY MODE
G15A THRU G15M	X07	Approximate 0.0169	3000	15000	120000	7" reel
G15A THRU G15M	Omit for Standard	Approximate 0.0169	10000	30000	210000	13" reel

■ **OUTLINE DIMENSIONS**



SOD-123FL		
Dim	Min	Max
A	1.60	1.90
B	0.90	1.10
C	2.55	2.85
D	3.60	3.90
E	1.00	1.20
F	0.40	0.90
G	0.10	0.25
H	0.02	0.05

■ **SUGGESTED PAD LAYOUT**



SOD-123FL	
Dim	Millimeters
P1	3.90
P2	1.90
Q1	1.00
Q2	1.50